



ACCESSIBLE CITY



# Catalog 2020

Development, design,  
production of tactile  
indicators.

[accessiblecity.eu](http://accessiblecity.eu)





# We Are Interested in

Construction and installation companies, holdings, commercial facilities and organizations.  
Companies that are engaged in completing objects!



# // About Us

## Our goal

«Accessible city» cooperates with reliable designers and contractors. We are an organization with a crystal clear purpose. We look forward to moving forward with our mission with your support and trust in our organization.

## Our mission

This is precisely the mission that our company has been fulfilling since its inception. For the comfort of people with disabilities, we want all office spaces, public and entertainment areas to be equipped with tactile signs.

**Our products are made from the following materials:**

- Stainless steel
- Brass
- Polyurethane

**The Accessible City company provides its clients with the following types of indicators:**

- Tactile indicators made of stainless steel AISI 304 and AISI 316;
  - Brass tactile indicators;
- Combined tactile indicators (steel + polyurethane);
- Tactile indicators with a photoluminescent insert.



ACCESSIBLE CITY

«Accessible city» specializes in the production of tactile indicators.

Our company performs a full production cycle.

## High quality indicators

We buy metal from large manufacturers with an impeccable reputation. Indicators are manufactured on modern equipment at the factory. We check the geometric characteristics of each batch twice, first in the workshop and the second time before shipping to the customer.



## Indicators at the best prices

Thanks to modern equipment and a professional team, production costs are reduced and we can offer indicators at the best prices.



## Aesthetics

Large range of standard sizes and materials for your choice. Our indicators will harmoniously fit into the interior and exterior, and will serve you for many years.



// **Our Advantage**



# Get a Quote

Our specialists will inform you about all your questions, calculate the cost of services, and prepare an individual commercial offer for you.



**+38618888882**

# Our Products

The company «Accessible city» has specialized in the production of tactile indicators since 2016.

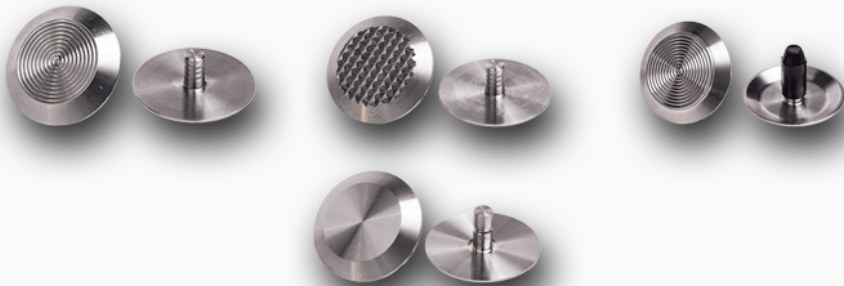
Development, design, production  
of tactile indicators.



[View Catalog](#)

# AISI 304 stainless steel

## TACTILE WARNING STUD



Size: 35\*5    Weight: 19 grams

## TACTILE WARNING STRIP



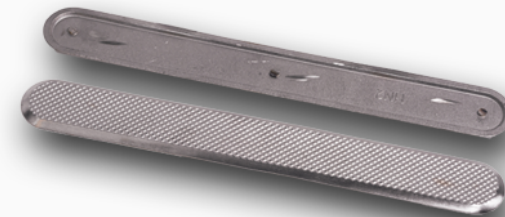
Size: 280\*35\*5    Weight: 240 grams

## TACTILE WARNING STUD without pin



Size: 35\*5    Weight: 18 grams

## TACTILE WARNING STRIP without pin



Size: 280\*35\*5    Weight: 235 grams

# AISI 304 stainless steel

**TACTILE WARNING STUD with adhesive layer without pin**



Size: 35\*5

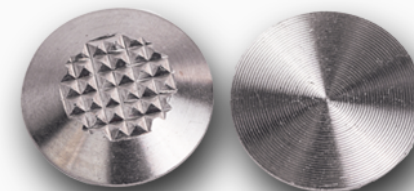
Weight: 32 grams

**TACTILE WARNING STUD**



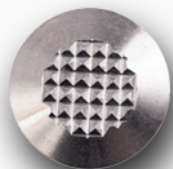
Size: 25\*5 Weight: 10 grams

**TACTILE WARNING STUD without pin**



Size: 25\*5 Weight: 9 grams

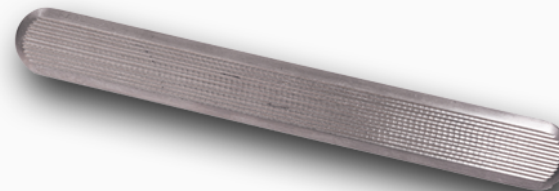
**TACTILE WARNING STUD with adhesive layer without pin**



Size: 25\*5

Weight: 11 grams

**TACTILE WARNING STRIP with adhesive layer without pin**



Size: 280\*35\*5 Weight: 320 grams



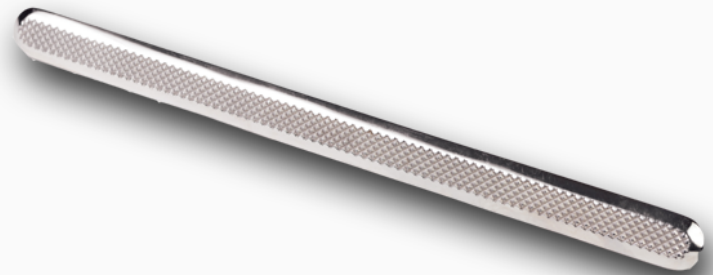
# AISI 304 stainless steel

**TACTILE WARNING STRIP**



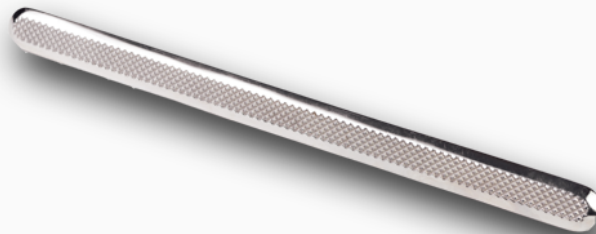
Size: 280\*25\*5    Weight: 200 grams

**TACTILE WARNING STRIP without pin**



Size: 280\*25\*5    Weight: 198 grams

**TACTILE WARNING STRIP with adhesive layer without pin**



Size: 280\*25\*5    Weight: 210 grams

# AISI 304 steel + Polyurethane foam

## TACTILE WARNING STUD with yellow PU insert



Size: 35\*5

Weight: 19 grams

## TACTILE WARNING STUD with black PU insert

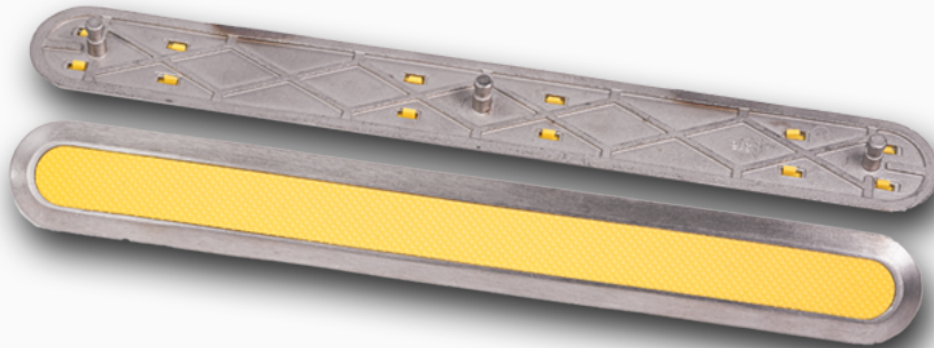


Size: 35\*5

Weight: 19 grams

# AISI 304 steel + Polyurethane foam

**TACTILE WARNING STRIP with yellow or black PU insert**



Size: 280\*35\*5

Weight: 230 grams

**TACTILE WARNING STRIP with black PU insert**



Size: 280\*35\*5

Weight: 230 grams

# Polyurethane foam

TACTILE WARNING STUD yellow PU



Size: 35\*5

Weight: 4 grams

TACTILE WARNING STRIP color PU



Size: 280\*35\*5

Weight: 45 grams

# Brass

**TACTILE WARNING STUD Brass**

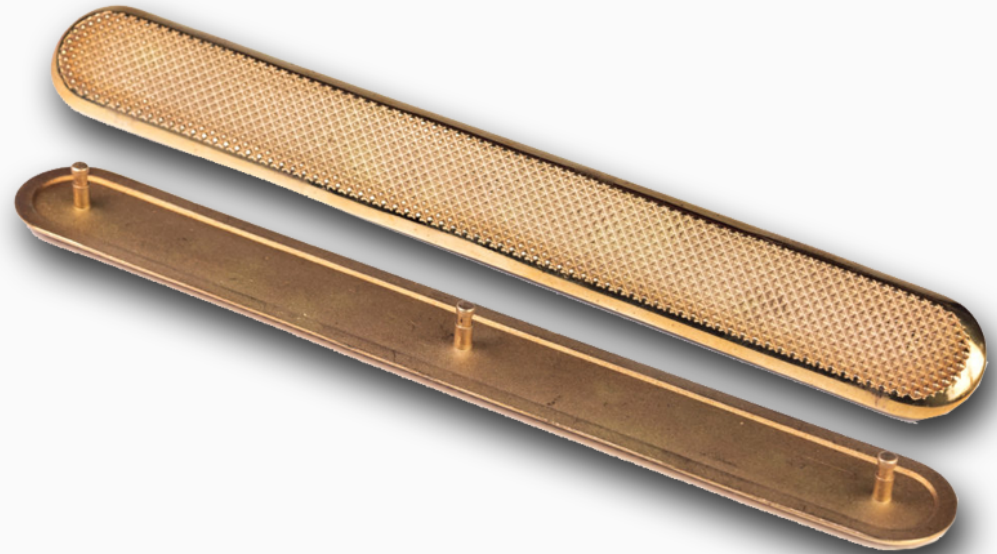


Size: 35\*5

Weight: 30 grams

---

**TACTILE WARNING STRIP Brass**



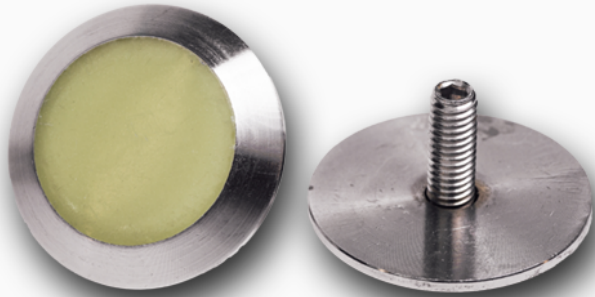
Size: 280\*35\*5

Weight: 310 grams

---

# AISI 304 steel + Photoluminescent insert

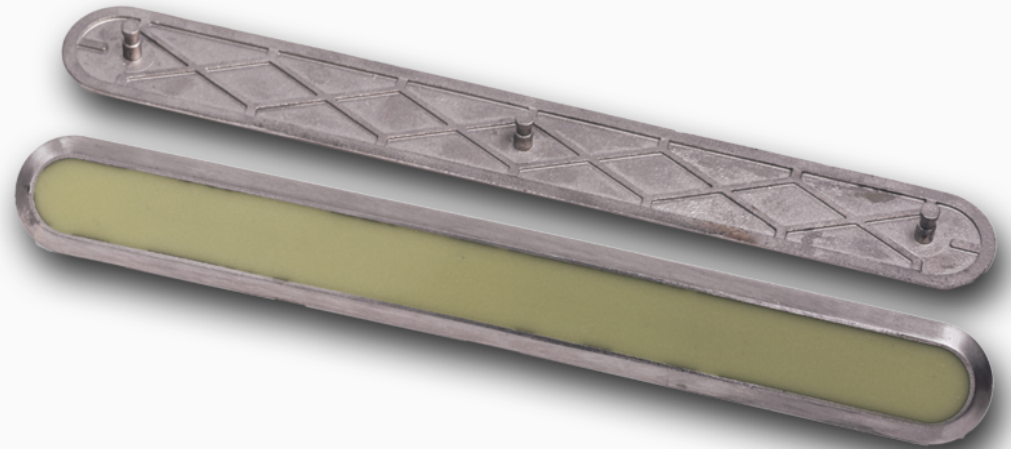
**LUMINOUS STAINLESS STEEL  
TACTILE WARNING STUD**



Size: 35\*5

Weight: 22 grams

**TACTILE WARNING STRIP +  
Photoluminescent insert**



Size: 280\*35\*5

Weight: 257 grams

# AISI 304 stainless steel

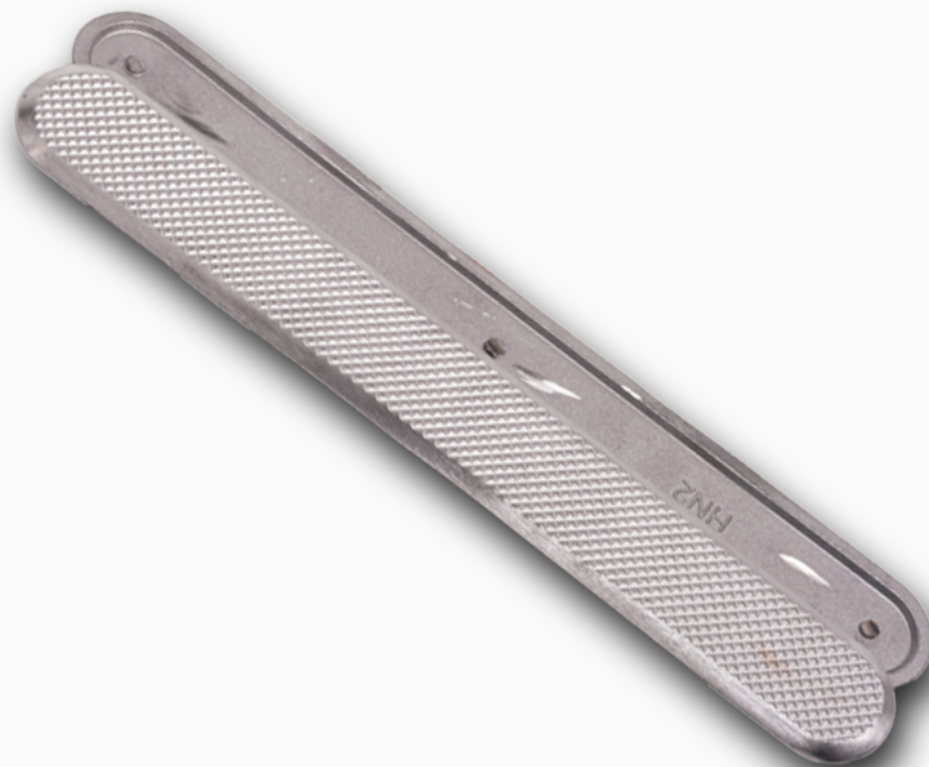
**TACTILE WARNING STUD without pin**



**Size: 35\*5**

**Weight: 30 grams**

**TACTILE WARNING STRIP without pin**



**Size: 280\*35\*5**

**Weight: 320 grams**

# AISI 316 steel

## TACTILE WARNING STUD



Size: 35\*5

Weight: 19 grams

## TACTILE WARNING STRIP



Size: 280\*35\*5

Weight: 240 grams



# AISI 316 steel

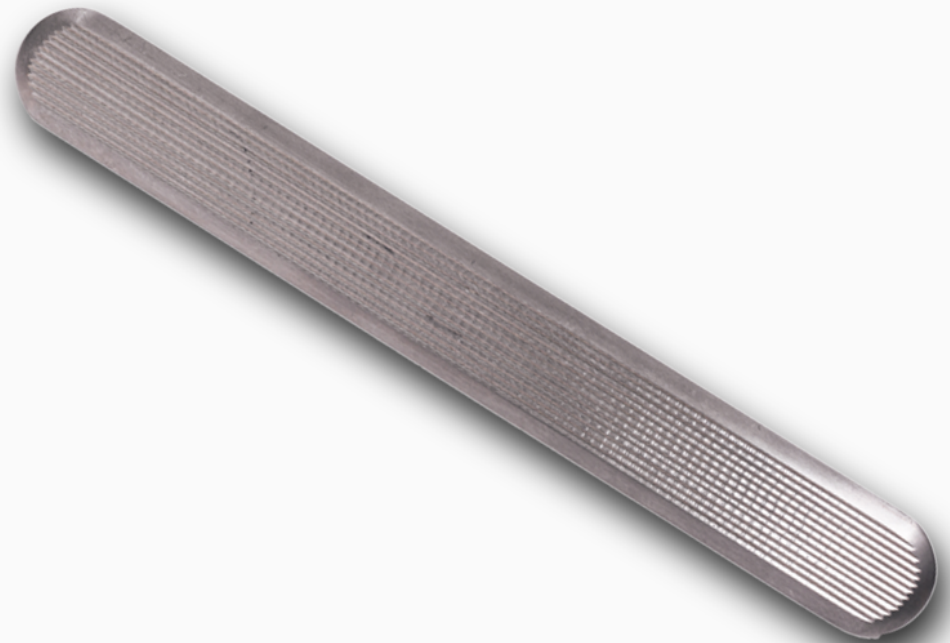
**TACTILE WARNING STUD with adhesive layer without pin**



**Size: 35\*5**

**Weight: 32 grams**

**TACTILE WARNING STRIP with adhesive layer without pin**

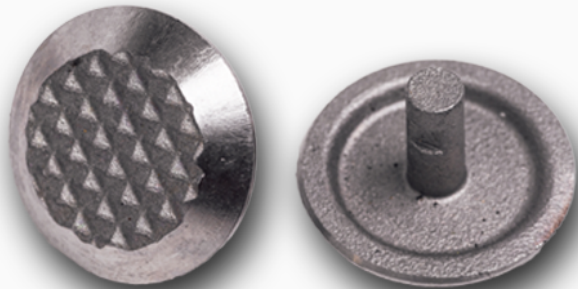


**Size: 280\*35\*5**

**Weight: 330 grams**

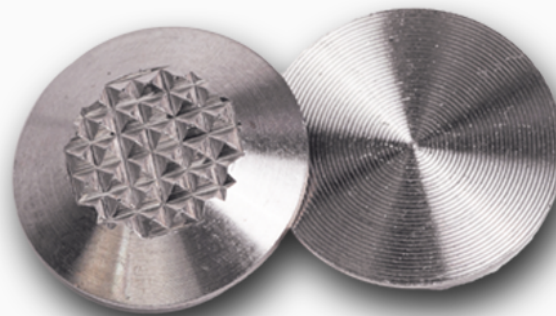
# AISI 316 steel

TACTILE WARNING STUD



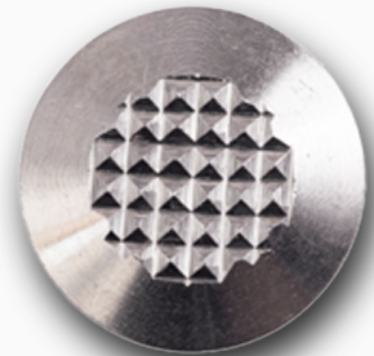
Size: 25\*5    Weight: 10 grams

TACTILE WARNING STUD  
without pin



Size: 25\*5    Weight: 9 grams

TACTILE WARNING STUD with  
adhesive layer without pin



Size: 25\*5    Weight: 10 grams

# AISI 316 steel

## TACTILE WARNING STRIP



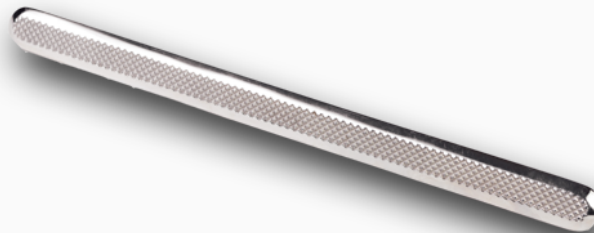
Size: 280\*25\*5      Weight: 200 grams

## TACTILE WARNING STRIP without pin



Size: 280\*25\*5      Weight: 198 grams

## TACTILE WARNING STRIP with adhesive layer without pin



Size: 280\*25\*5      Weight: 210 grams

# // Work with us

«Accessible city» cooperates with reliable designers and contractors. We are an organization with a crystal clear purpose. We look forward to moving forward with our mission with your support and trust in our organization.

Our specialists will inform you about all your questions, calculate the cost of services, and prepare an individual commercial offer for you.



<https://accessiblecity.eu/>

Celovska cesta 69C, 1000  
Ljubljana, Slovenia

Phone: +38618888882

e-mail: [info@accessiblecity.eu](mailto:info@accessiblecity.eu)



# THANK YOU



**+38618888882**